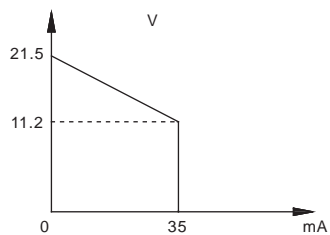
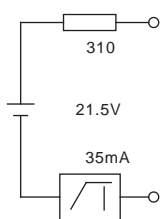


NPEXB-H511L

35mA

20V DC 30V DC

> 11.2V DC
21.5V DC



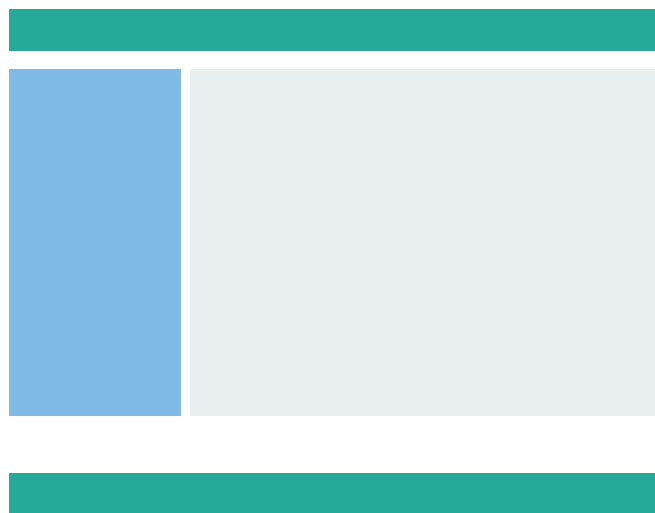
< 20ms
IEC 61326-3-1

-20 +60
-40 +80

15.8mm x 121.6mm x 104.8mm

0 1 2 II A II B

II C T4 T6



(NEPSI)

[Ex ia Ga] II C
(Um) 250V
(1 2)

Uo=25.2V, Io=85mA, Po=536mW
II C Lo=4.2mH
II B Lo=12.6mH
II A Lo=33.6mH